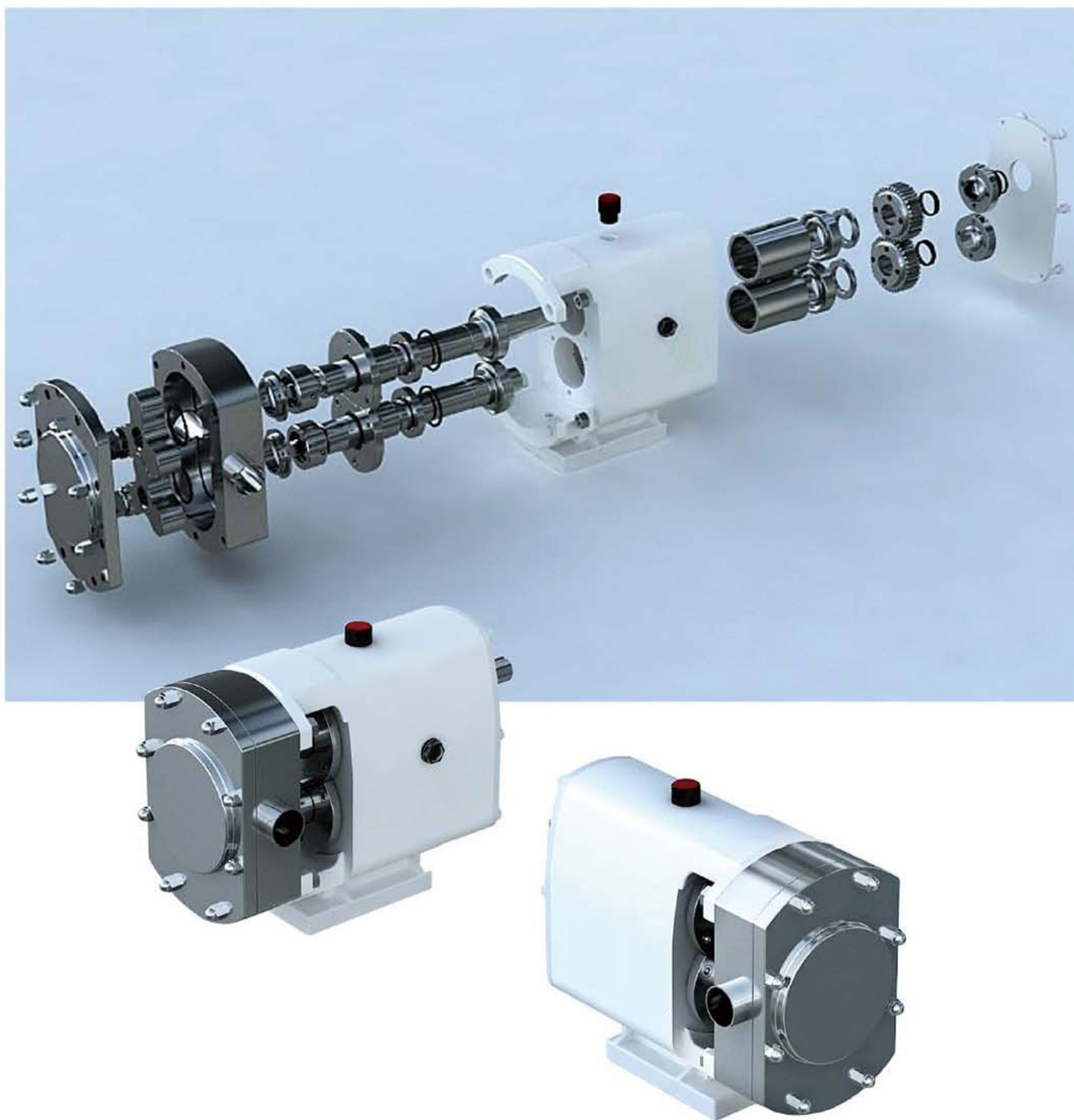




温州市悠远流体设备有限公司

Wenzhou Yoyond Liquid Equipment CO.,LTD



Hygienic Rotary Lobe Pump (Rotor Pump)

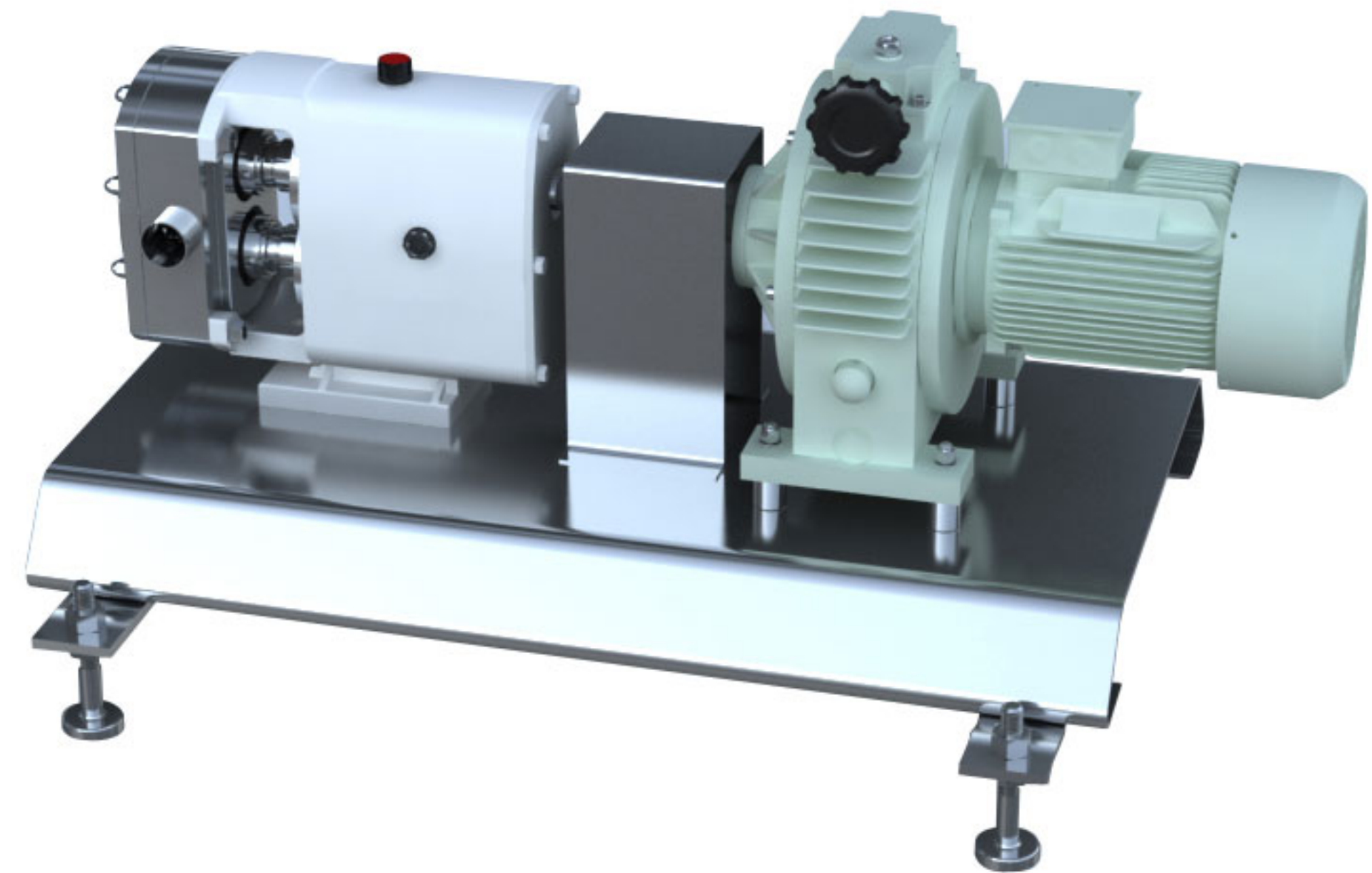
Add: Dingxiang Road, Binhai Park, Economic Development Zone, Wenzhou, China

Tel: +86-577-8682 2825

Http://www.yoyond.net

Fax: +86-577-8682 2823

E-mail: yoyondsales@gmail.com

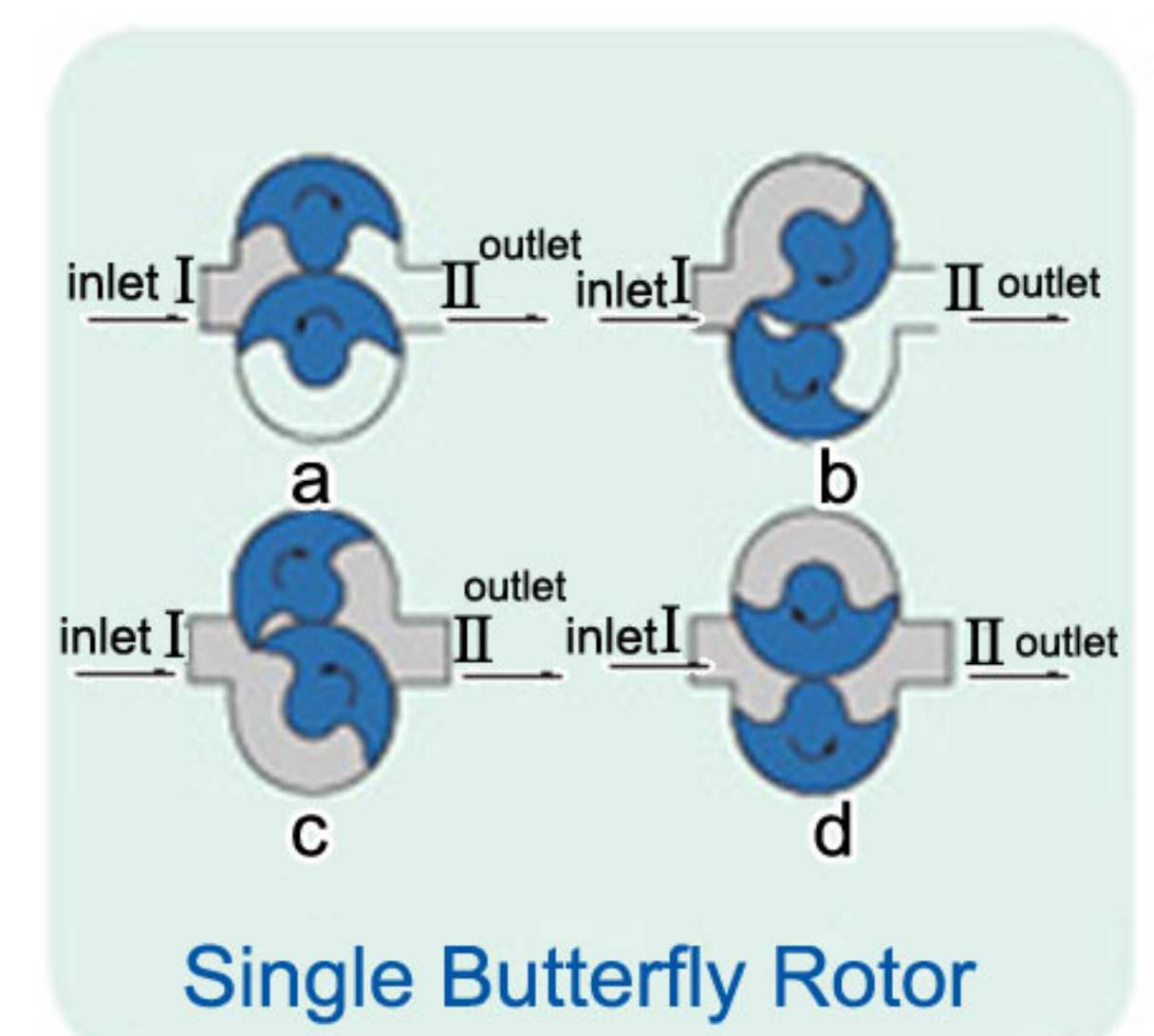
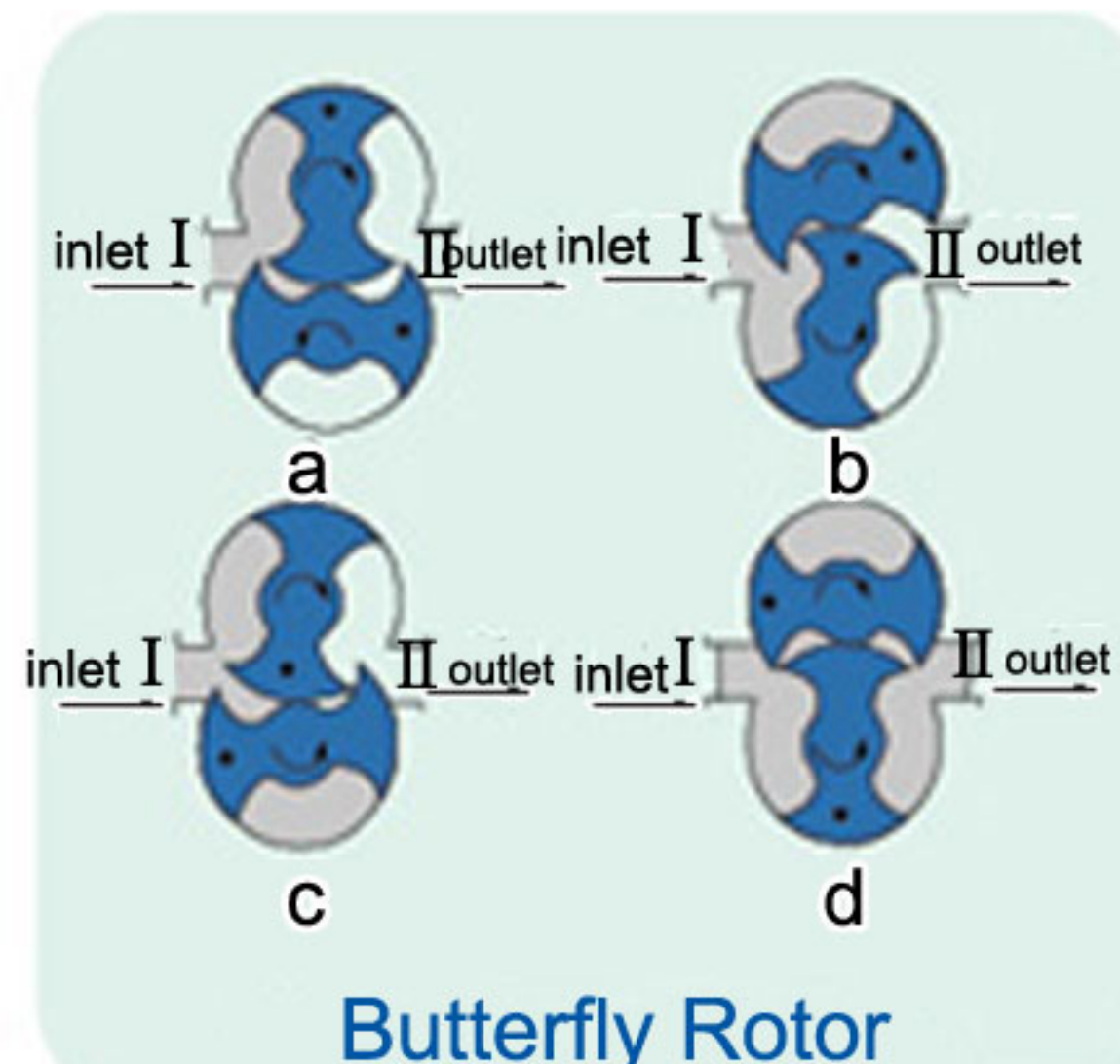
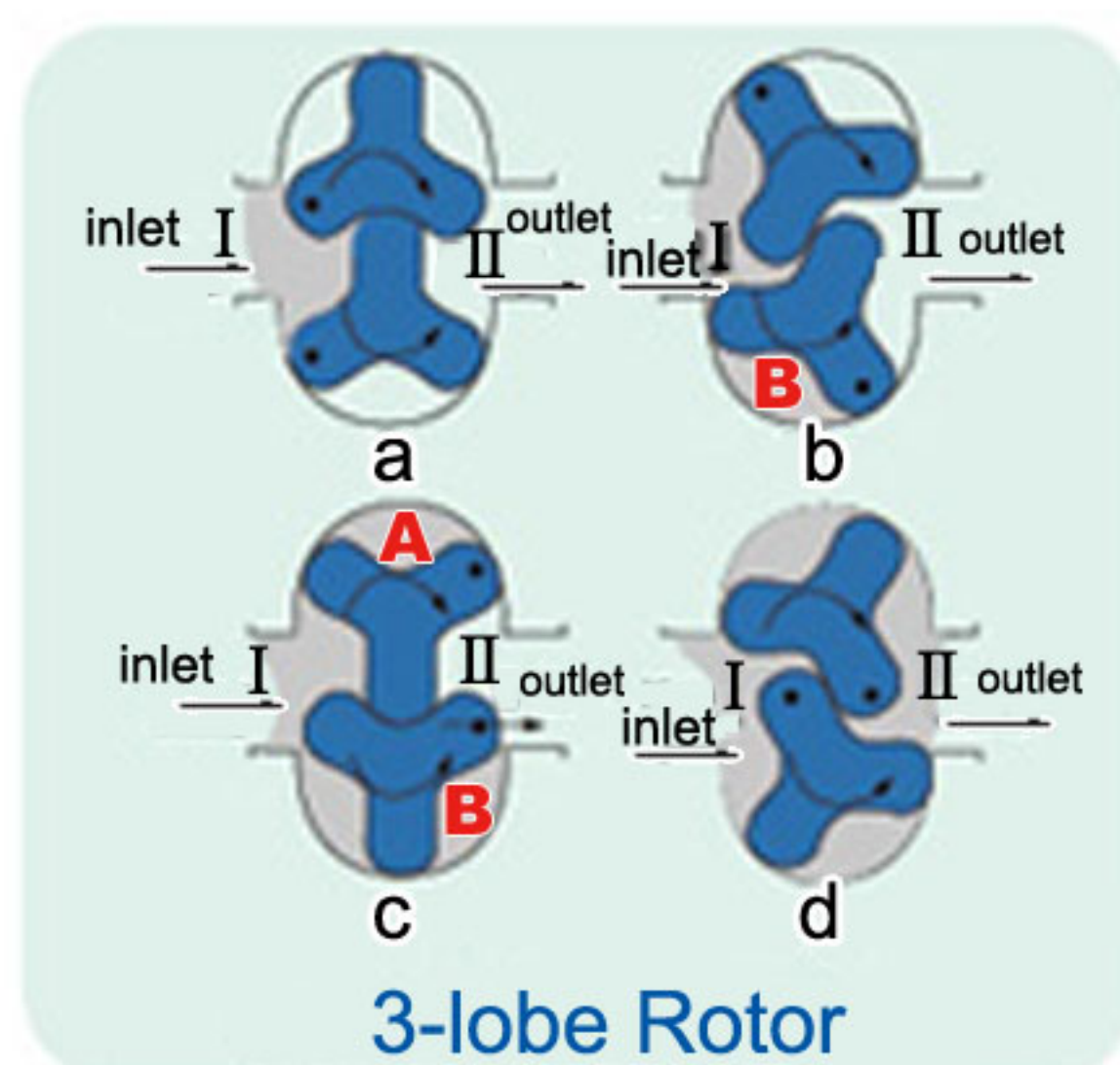


Hygienic Rotary Lobe Pump (Rotor Pump)

Operation Principle:

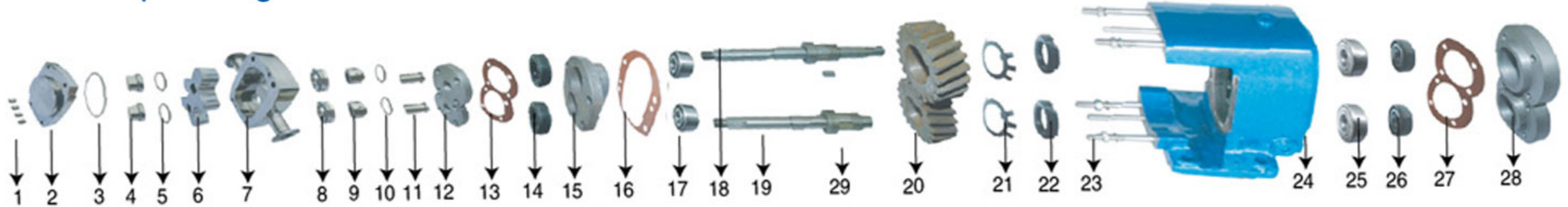
Rotor pump is also named rotary lobe epump, three-lobe pump, sole pump, etc. When the 2 simultaneous reverse rotating rotors (with 2-4 gears) revolve, it produces suction force at the inlet (vacuum), which intakes the material delivered. The 2 rotors divide the rotor housing into many smaller parts and operate in the sequence of $a \rightarrow b \rightarrow c \rightarrow d$. When it revolves to position a, only housing I is filled with medium; when it revolves to position b, housing B encloses part of the medium; when it goes to position c, housing A encloses medium, and finally it goes to position d, then housing A, B and II are interlinked and the medium is transported to the outlet. As this process is repeated, medium (material) is transported continuously.

Principle Scheme:



Hygienic Rotary Lobe Pump (Rotor Pump)

Rotor Pump Configuration



- 1.Screw cap 2.Pump cover 3.Seal ring 4.Cap 5.Seal ring 6.Rotor 7.Pump cavity 8.Mechanical seal (stationary ring) 9.Mechanical seal(moving ring) 10.Seal ring
11.Bearing sleeve 12.Bearing cover 13.Seal gasket 14.Rubber oil seal 15.Bearing seat 16.Seal gasket 17.Bearing 18.Upper shaft 19.Lower shaft 20.Helicalgear
21.Stop washer 22.Cap 23.Screw 24.Pump body 25.Bearing 26.Rubber oil seal 27.Seal gasket 28.Bearing cover 29.Pin

Special Structure



3-lobe Rotor



Butterfly Rotor



2-leaf Rotor



Single Butterfly Rotor

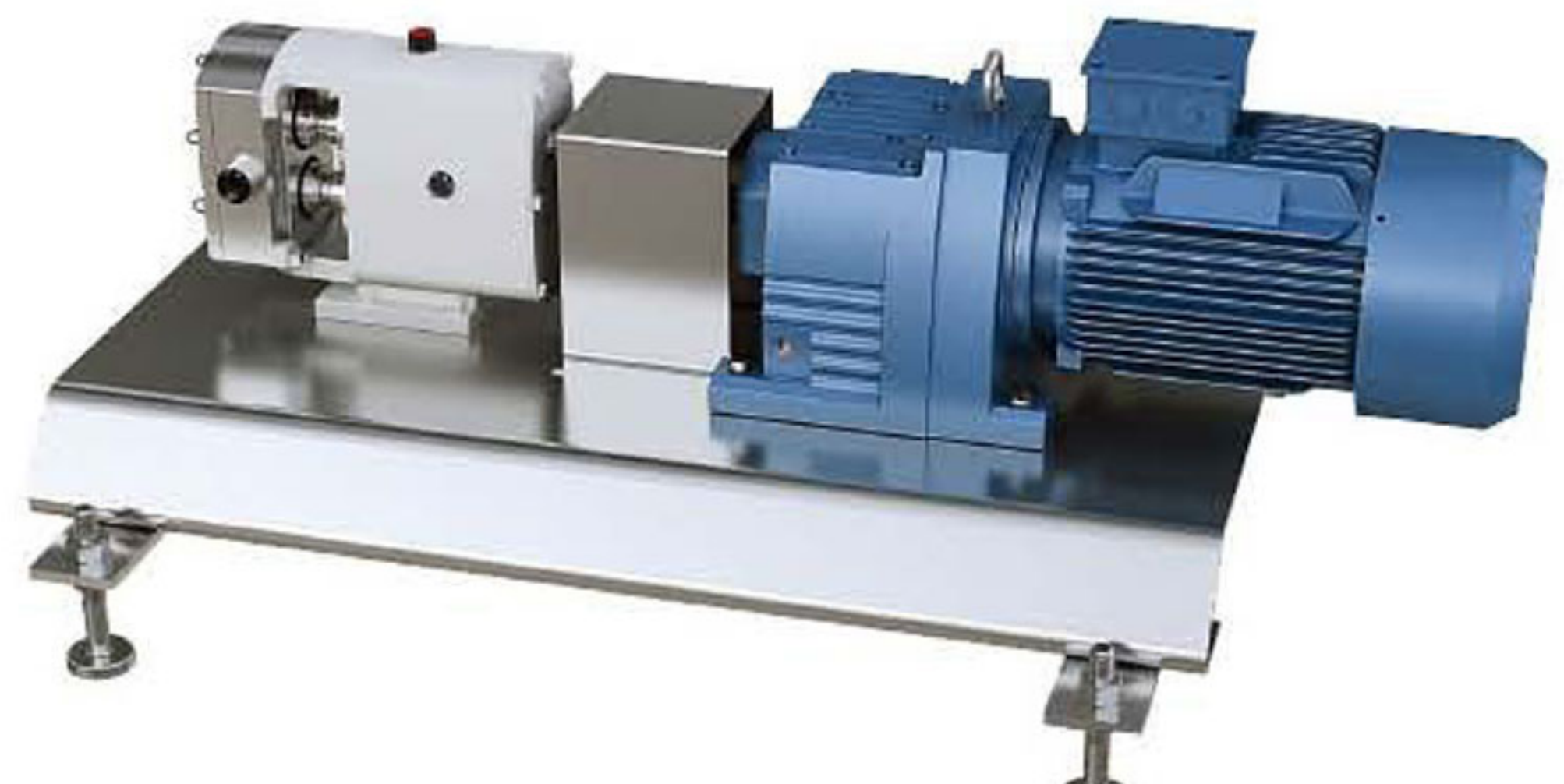
Butterfly rotor pump:

With butterfly rotor, it is superior to other rotor pump when transferring material with high viscosity and larger powder and effectively transports extremely stiff material.

Single butterfly rotor pump(grain rotor pump):

This pump series are specially designed to transport material with large grain. Its unique shape and curve makes it more outstanding compared to other pumps in delivering material with large grains. It effectively prevents grains from clashing, which is the first choice of pumps transferring material with grains.

Fixed-speed-type output lobe pump
please specify the speed when ordering



Hygienic Rotary Lobe Pump (Rotor Pump)

Application

☉ Food Industry:

Yogurt, Fresh Butter, Ice Cream, Cheese, Whey, Beer, Wort, Yeast, Soft Drink, Fruit Jelly, Fruit Drink, Ketchup, Fruit Puree, Vegetable Mash, Pudding, Fruit Jam, Jelly, Flavor, Fruit Stuffing, Sweet, Yeast, Seasoning, Bread, Meat Gruel, Comminuted Meat, Meat Oil, Edible Oil, Candy, Syrup, Thin Cream Dressing, Chocolate, Etc.

☉ Daily Chemicals:

Cleansing Facial Milk, Hair Gel, Hair Dyes, Essence Oil, Toothpaste, Detergent, Shampoo, Shoe Polish, Cosmetics, Perfumery- Compound, Soap, Balsam, Etc.

☉ Pharmacy:

Various Pill, Paste, Emulsifier, Syrup, Nutrition Liquid, Chinese Traditional Patent Medicine, Medicine Grease, Biological Products, Fish Meal, Pollen, Royal Jelly, Vaccine.

☉ Chemical Industry:

Fat, Dissolvent, Resin, Polymer, Paint, Pigment, Dyes, Coating Material, Lubricant, Lubricating Grease, Oil Agent, Emulsified Asphalt, Adhesive, Plastic, Explosives, Glass Fiber Reinforced Plastics, Leather, Etc.

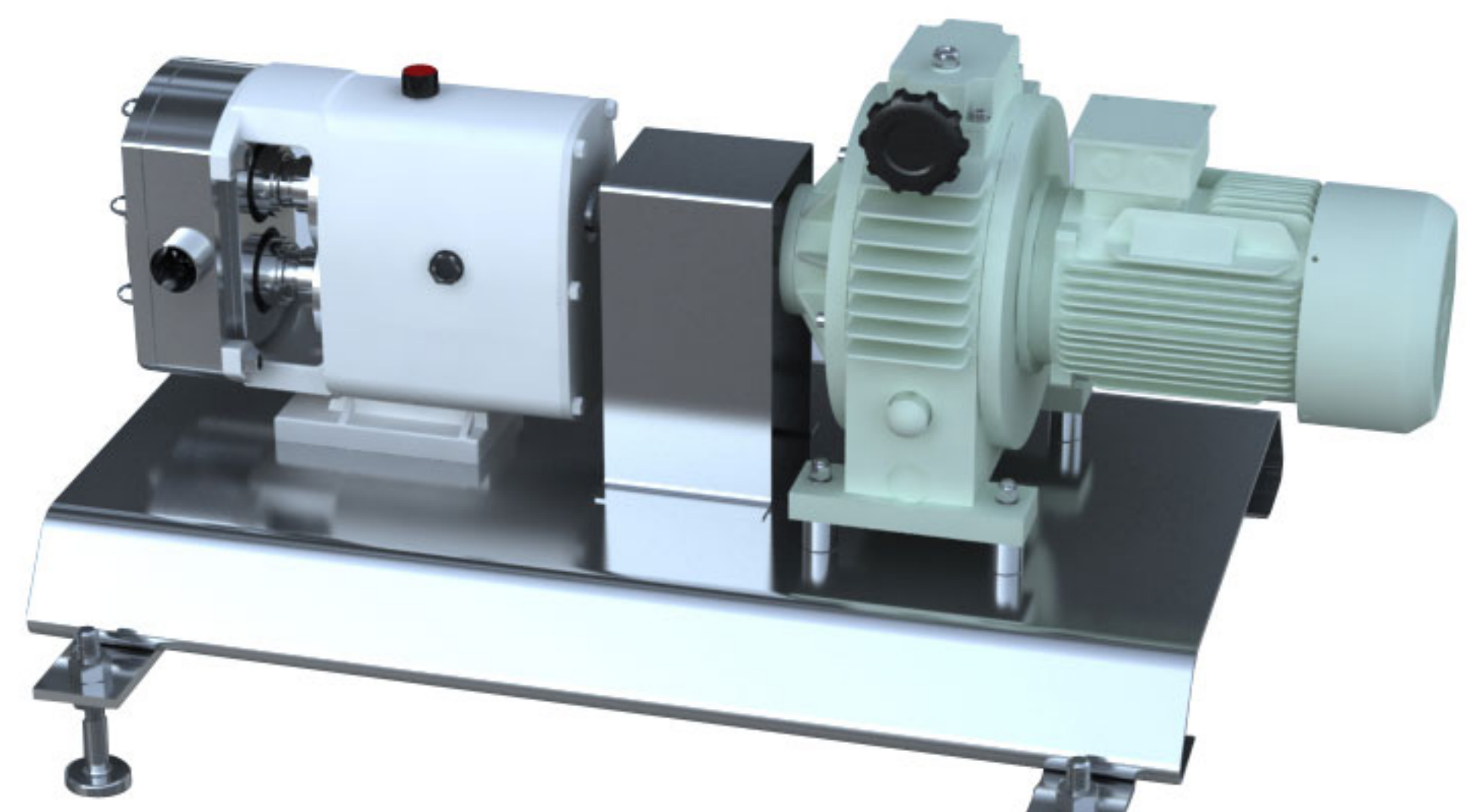
☉ Construction Industry:

Various Coating, Including Indoor/outdoor Wall Coating, Corrosion and Water Proof Coating, Ceramic Coating, Paint Coating, Ceramic Glazing, Etc.

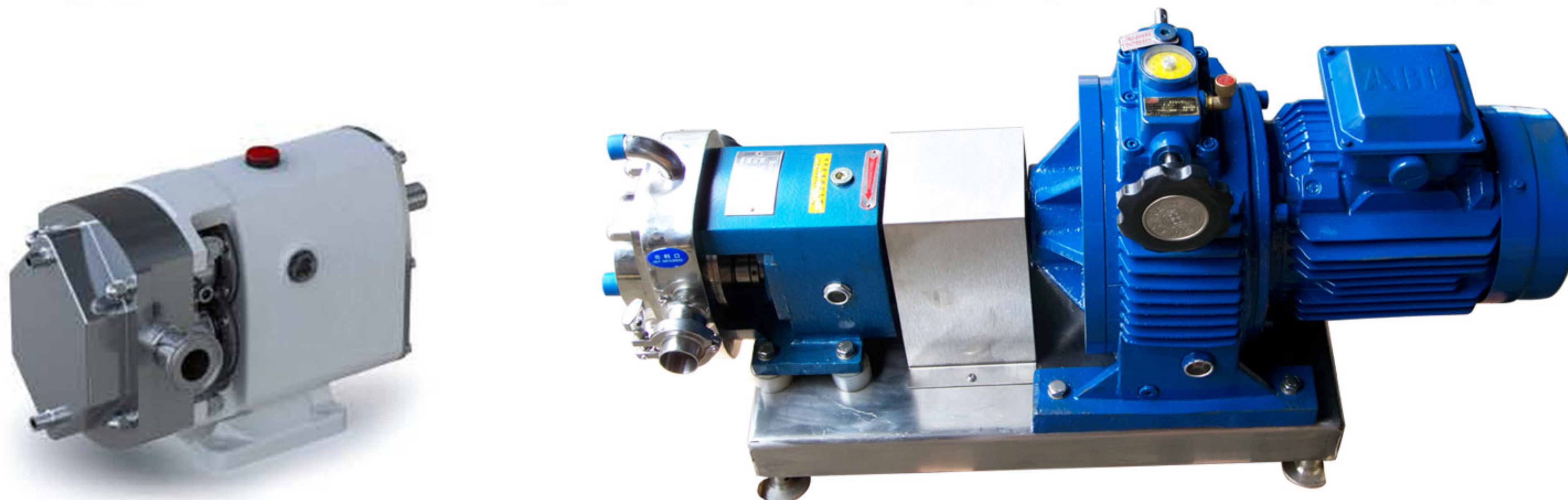
☉ Other Industries:

Plastic Industry, Textile Industry, Paper making Industry, Coal Floatation Agent, Nanometer Material, Biochemical Industry, Etc.

Manual Adjusted Stepless Transmission
Mechanical Friction Stepless Adjuster



Hygienic Rotary Lobe Pump (Rotor Pump)



Double Jacketed Rotary Lobe Pump

The heat retaining rotor pump configuration is widely used in transportation of materials which will be freezed at room temperature or deteriorated at high temperature such as chocolate, candy, gum and etc. According to process requirement, with options of the front cover or all around heat insulation structure.

Water-cooled mechanical seal

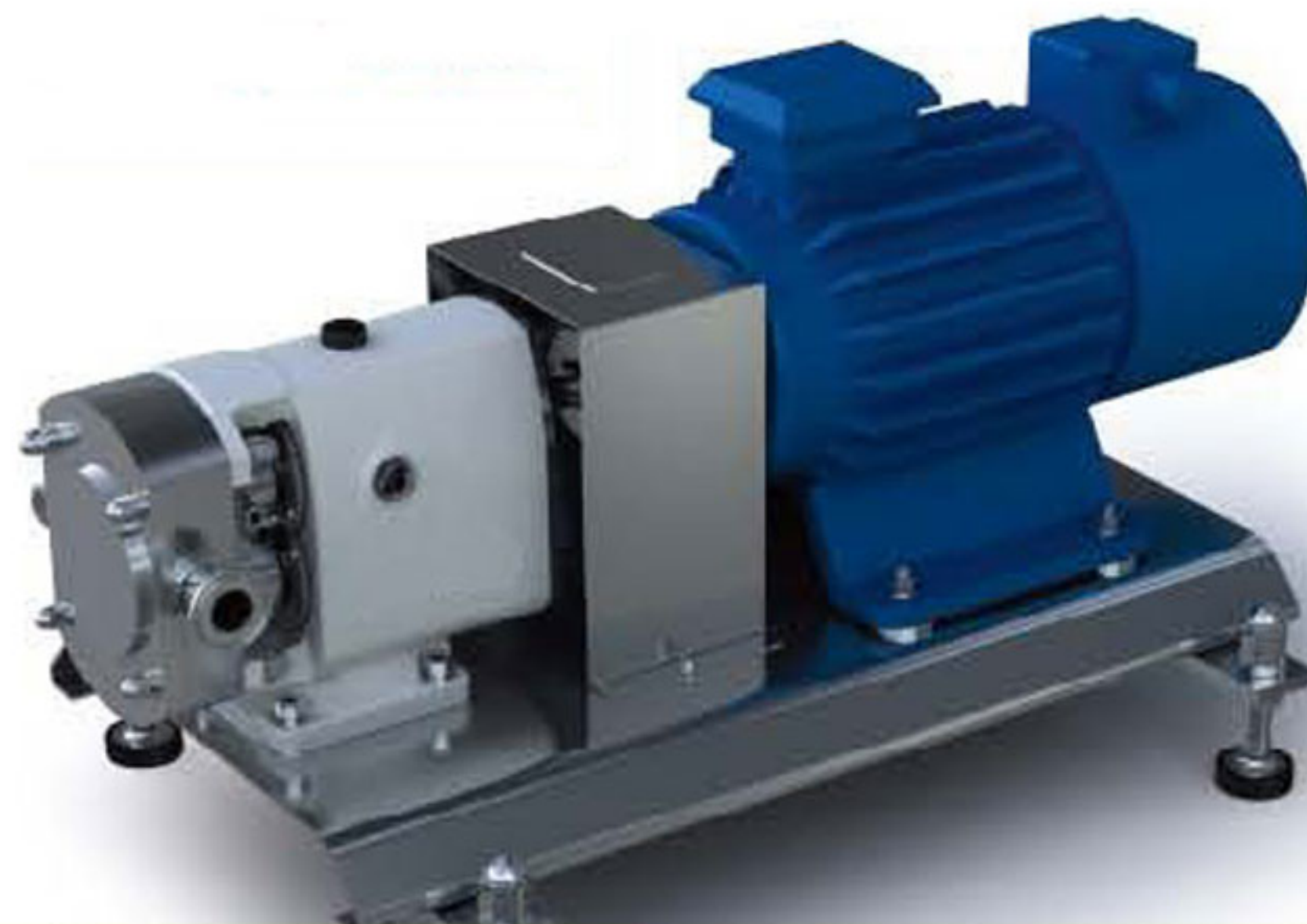


Water Cooling Mechanical Seal Lobe Pump

Used in high temperature and high viscosity materials such as syrup, tomato paste and etc.

Variable-Frequency Adjusted Lobe Pump

Please advise the type of converter when ordering



Hygienic Rotary Lobe Pump (Rotor Pump)

Parameters

Model	Flow per 100 Rotation(L)	Adjusting speed (rpm)	Liquid(L/H)	Power(Kw)
YY3A-3	3	200-500	300-800	0.55
YY3A-6	6	200-500	650-1600	0.75
YY3A-8	8	200-500	850-2160	1.5
YY3A-12	12	200-500	1300-3200	2.2
YY3A-20	20	200-500	2100-5400	3
YY3A-30	30	200-400	3200-6400	4
YY3A-36	36	200-400	3800-7600	4
YY3A-52	52	200-400	5600-11000	5.5
YY3A-66	66	200-400	7100-14000	7.5
YY3A-78	78	200-400	9000-18000	7.5
YY3A-66	100	200-400	11000-22000	11
YY3A-78	135	200-400	15000-30000	15
YY3A-160	160	200-400	17000-34000	18.5
YY3A-200	200	200-400	21600-43000	22

Note:

- The flow in the table refers to the data tested taking water as the medium.
- Adopts stepless speed regulator or frequency transformer to adjust the speed, with speed adjustable in 200-900rpm.
- The motor power should be increased when delivering high viscosity liquid,
- For mediums that flow slowly, suggest delivering in the inlet with pumps of matched flow.
- The data in the table is subject to change without notice . See the actual products for the right data.

